

Machine Crosslinks for Version 7.3

This Feature has been added to the software for all Version 7 registers

Limitations

The supported programs are PLU, UPC, Scan PLU, Department/Group and PLU Status Group. Only fields that are common among the linked machines will be shared within the crosslink. Users also need to take note of general item file editing and addition procedures. For example, on some CASIO registers the Scan PLU file is part of the PLU file and on others it is a completely separate file. On the ones that are part of the PLU file, items will need to be edited in two locations.

How to use the feature

This is a very powerful Version 7.3 feature. The Version 7.1 & 7.2 Polling software allows users to share complete PLU files between registers of the same type with the same program id. Now in Version 7.3, with crosslinks, users can share items on a per record basis and across register types. For example: the user can share the first 1000 items on a 1595 and a 1650. And then, have all items over PLU code 1000, be independent.

In order for this new feature to work, Version 7.3 can only share fields that are common across the register types. For example, the 1595 and the 1650 have very similar PLU files. However, Dollar Discount and Tare2 are only in the 1595. With a crosslink Version 7.3 shares all the fields that exist in both register types.

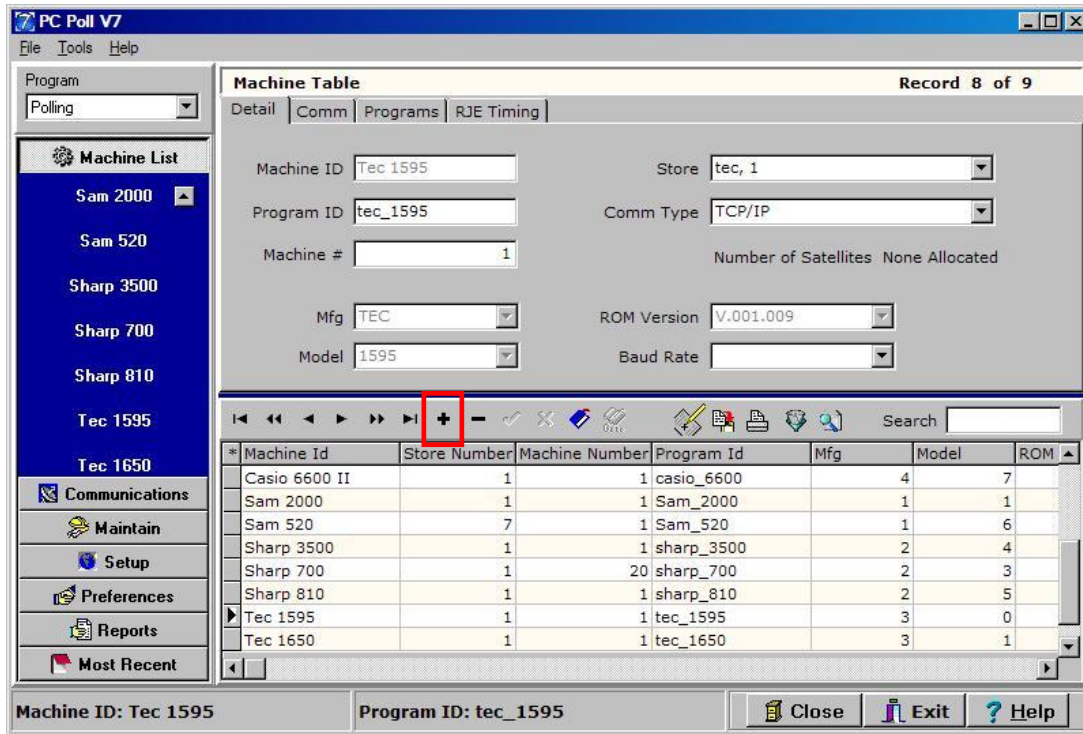
For Toshiba TEC, users can group any combination of 1595, FS1650, and MA1650 registers. On the Sam4s registers Version 7.3 has a new and old grouping for crosslinks. The old is the 650, 52xxM, and 285. The new is 1000, 7000, 2000 and 5x0. On the Sharp, Version 7.3 links all the Sharp registers. On the CASIO all machines are able to link as well.

In general, once a set of items are linked to a set of registers (a crosslink group), users simply need to enter one of the group's PLU/UPC/Scan PLU files and make edits. As long as all the edited items are linked to a crosslink group, the changes will automatically populate in the other machines' PLU/UPC/Scan PLU files. Then send PLU/UPC/Scan PLU or PLU Changes Only to each register and the updates are complete.

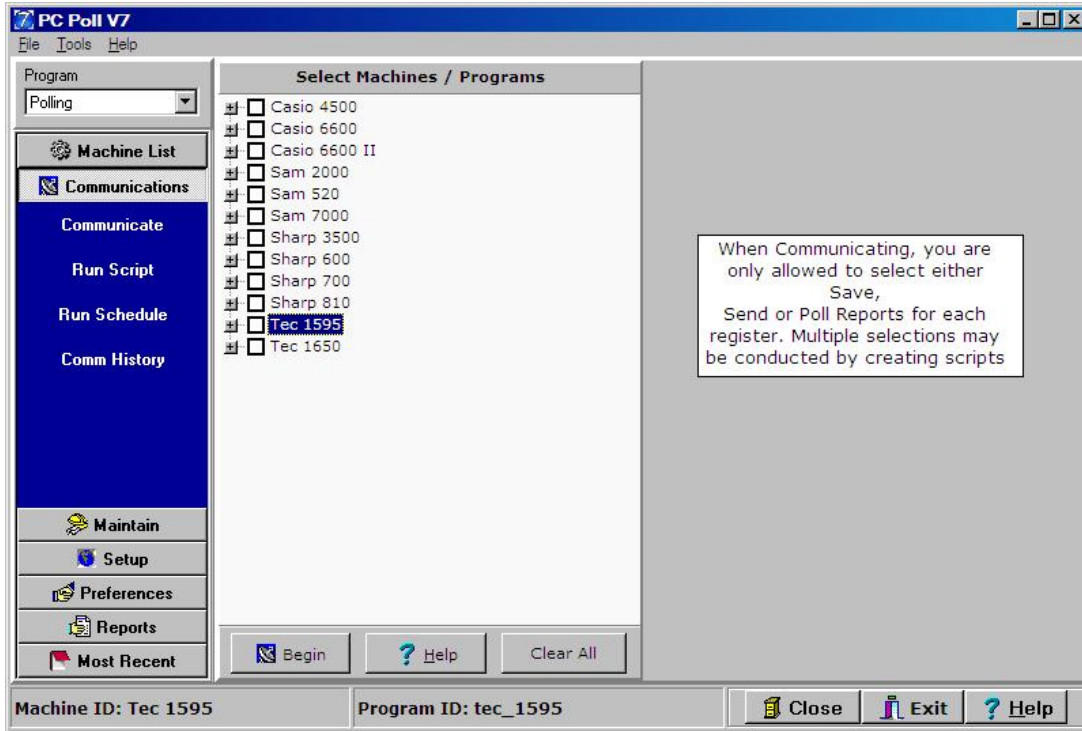
There is even a flag within the software to have the system automatically create new crosslinked items within all grouped machines when new items are added to the software.

Version 7.3 also has an override option within crosslinks. Users can choose to create exceptions on the following fields: Price, Tax, Class 1-3, and Cost. This means that those fields will be independent between all crosslinked machines. Note: When the V8 AIMsi Inventory interface is active, users can not select the override Price and Class options. Version 7.3 selects that for the user. Since the Version 7.3 Polling software is linked to inventory it requires those fields to be independent.

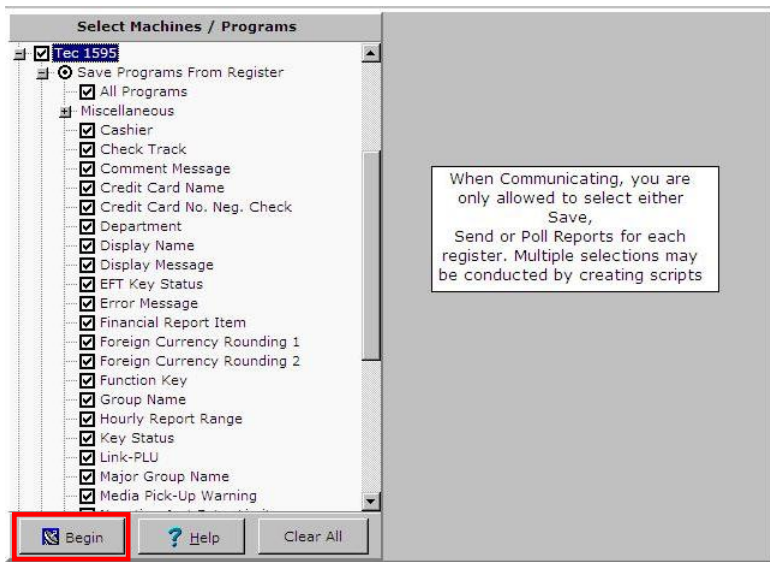
Note: The user should be running the current version of V7.3.



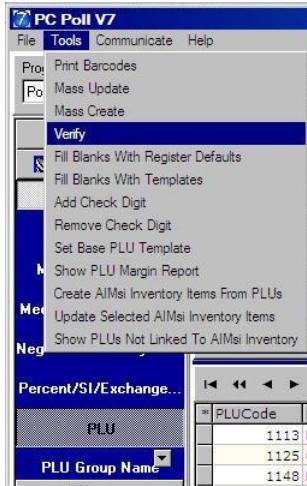
1. Open the Version 7.3 polling software. Select the first machine, from the machine list on the left menu under **Machine List**, to be linked which in this case is the TEC 1595 and the TEC 1650 will be crosslinked.
2. If the machine is not in the list, create the machine in V7 to match the original register by clicking the **Insert a new record** (plus sign) button on the toolbar. Fill in the pertinent information on the **Detail**, **Comm**, **Programs**, and the **RJE Timing** tabs (for the Sharp 600/700 TCP/IP communications only). When finished be sure to click on the **Post changes of current record** (check mark) button to save the new machine.



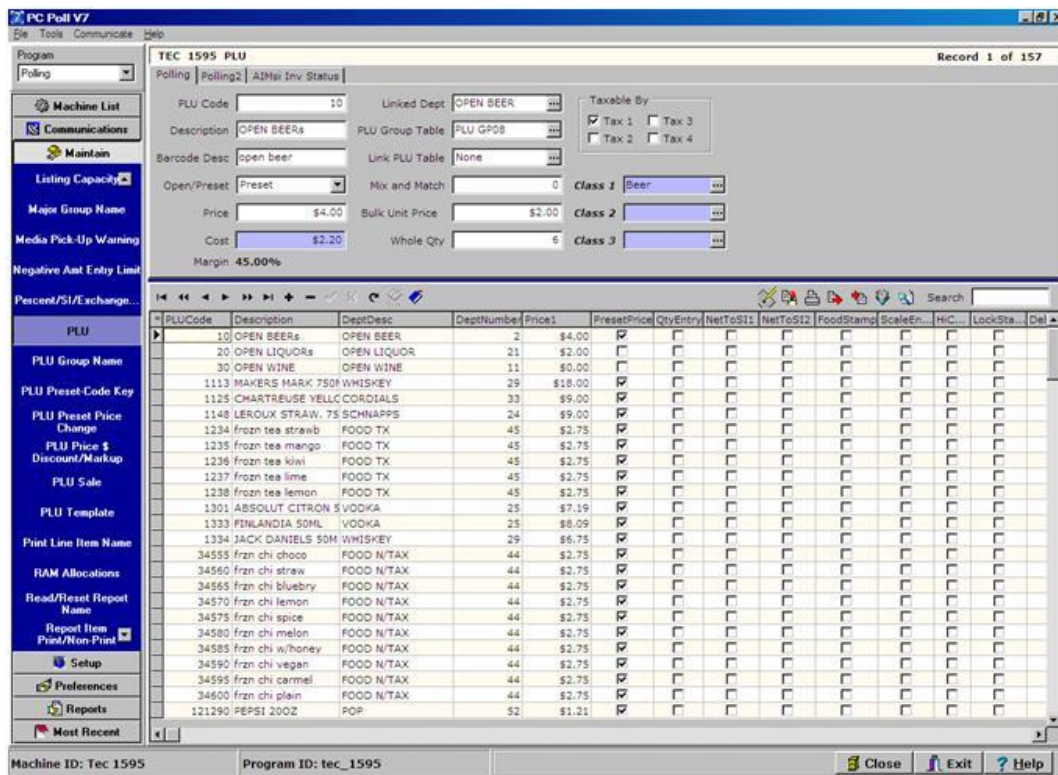
- From the menu on the left, click on **Communications**, and then **Communicate**. Click on the first register, in this case the TEC 1595.



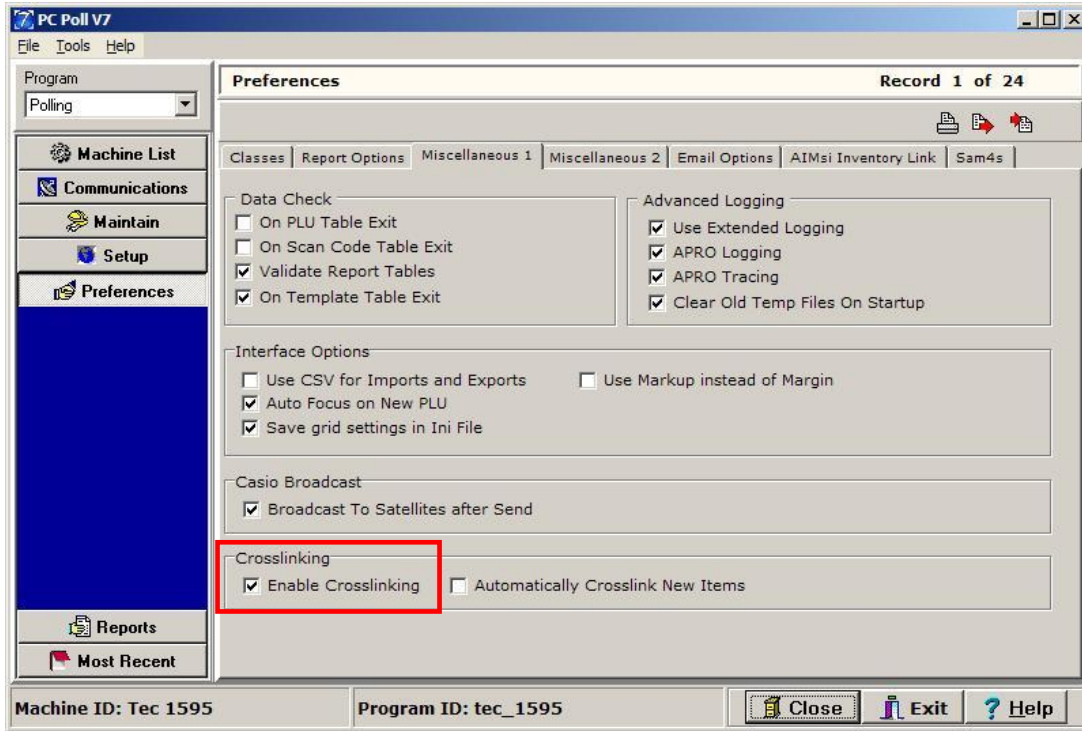
- Check off **All Programs** and do a Save All from the register by clicking the **Begin** button.



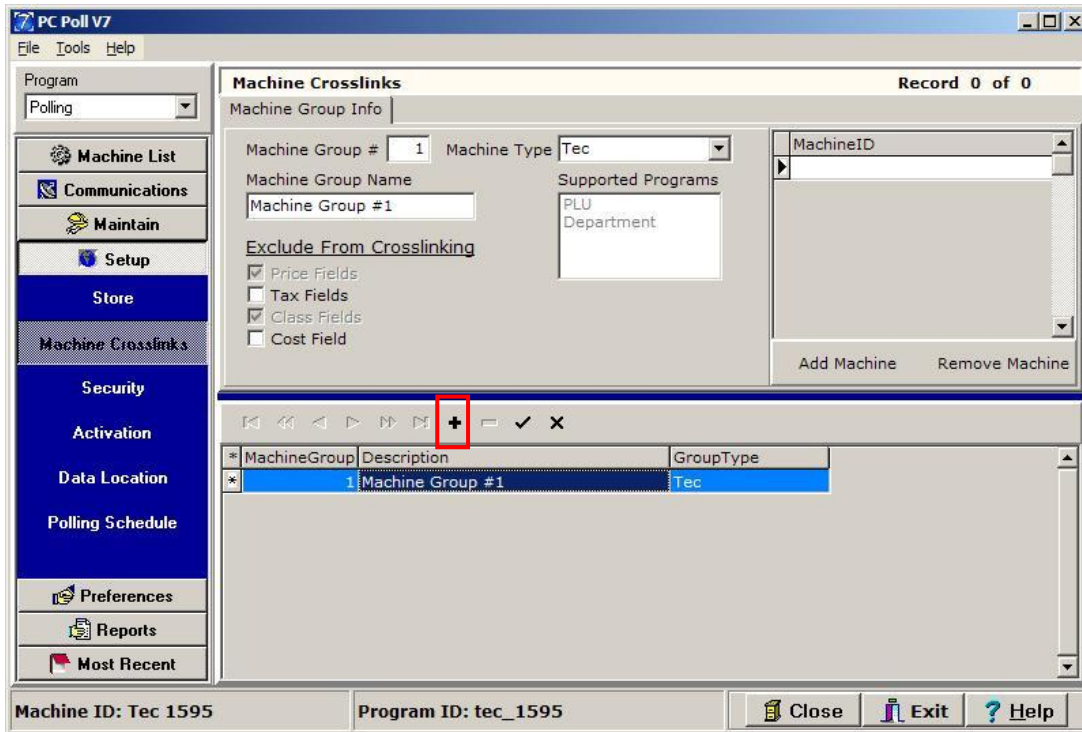
- From the left menu click on **Maintain**, then **PLU**. On the Tools menu at the top of the screen scroll down to **Verify**. This will verify the register file.



- Fix any errors and or remove any duplicate items. Use the **Maximize** button on the top right of the screen to expand the window to show more of the lower grid.
- If the second register, which will be the destination for the file, is not in the Machine List, create it using Step 2-5. If the second register is on hand, a save all programs can be done. If not this step can be skipped as long as the user manually increases the file allocations at the register to match the data and only send PLU, PLU Status Group, and Group to the register.



- To create a cross link for the two desired registers go to **Preferences**. Make sure **Enable Crosslinking** in the lower left on the **Miscellaneous 1** tab is checked off. Note: For now, leave **Automatically Crosslink New Items** at the bottom of the screen unchecked.



9. Click on **Setup** on the left menu then **Machine Crosslinks** (see previous page).
10. Click the **Insert New Record** button on the lower toolbar. *Note: Be sure to click the **Post changes of current record** to save the record when done.*
11. Add a **Machine Group Name** and select a **Machine Type**. In the example below the Machine Group Name is "TEC 1595 1650 crosslink" and the Machine Type is "TEC".

MachineGroup	Description	GroupType
1	TEC 1595 1650 crosslink	Tec

12. After clicking the **Post changes of current record** button on the toolbar, the changes will update. Add the machines by clicking on the **Add Machine** button above in the upper right grid.

MachineId	StoreNumber	MachineNumber	ProgramId	Mfg
Tec 1595	1	1	tec_1595	3
Tec 1650	1	1	tec_1650	3

13. The Tec 1595 and Tec 1650 have been added. Click **OK**.

Machine Crosslinks Record 1 of 1

Machine Group Info

Machine Group # Machine Type

Machine Group Name

Supported Programs

Exclude From Crosslinking

Price Fields
 Tax Fields
 Class Fields
 Cost Field

MachineID

Add Machine Remove Machine

14. To prevent **Price Fields**, **Tax Fields**, **Class Fields**, and **Cost Fields** from cross linking, check off any or all items in the **Exclude Items From Crosslinking** list on the **Machine Group Info** tab. **Price Field** and **Class Fields** are grayed out. These two fields are automatically picked when **AIMsi Inventory Link** is active.

Machine Crosslinks Record 2 of 2

Machine Group Info

Machine Group # Machine Type

Machine Group Name

Supported Programs

Exclude From Crosslinking

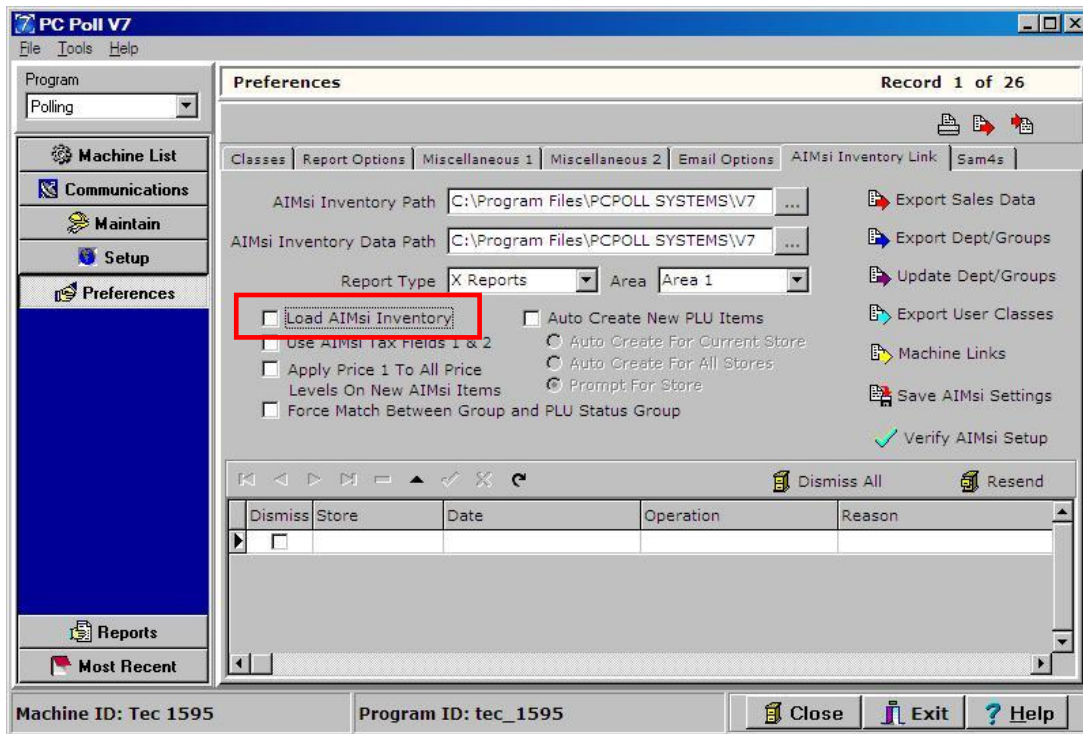
Price Fields
 Tax Fields
 Class Fields
 Cost Field

MachineID

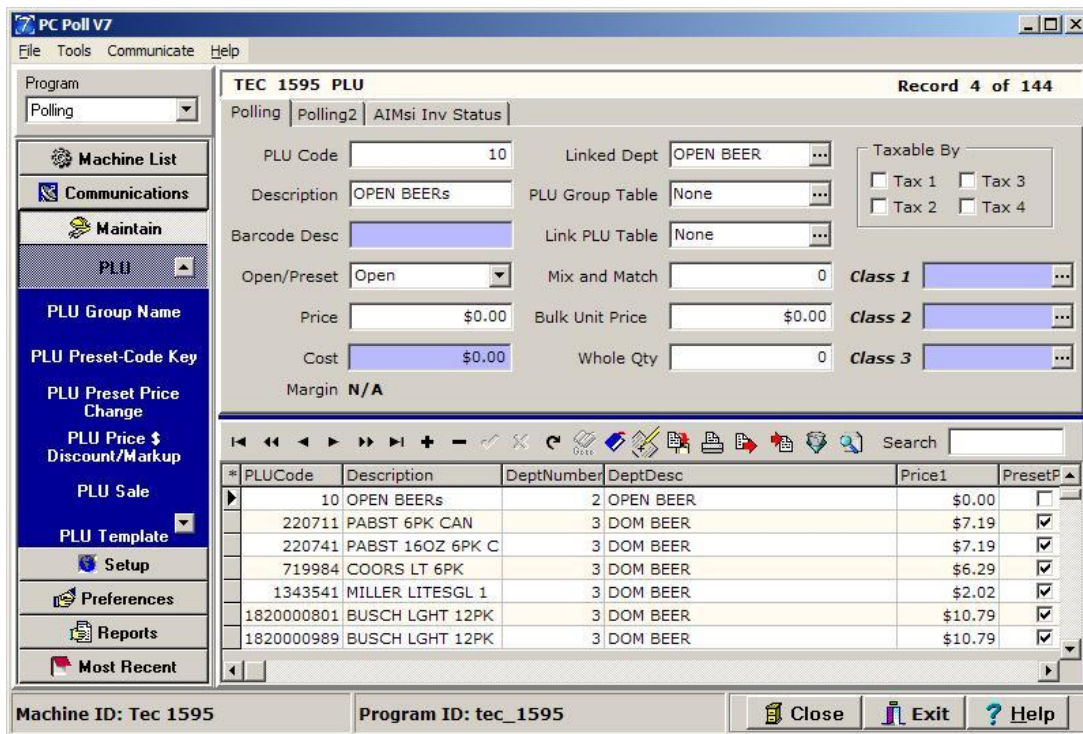
Add Machine Remove Machine

MachineGroup	Description	GroupType
1	TEC 1595 crosslink	Tec
2	TEC 1650 crosslink	Tec

15. Both registers are added to the crosslink.



16. Be sure Load AIMsi Inventory is not turned on. This option should not be a check off. Click on **Preferences** on the left menu, then click on the **AIMsi Inventory Link** tab.
17. Select the original machine in the **Machine List**.



18. Select **Maintain** on the left menu. Use the Up or Down arrows to scroll through the list under **Maintain** to **PLU**. Click on **PLU** or **UPC** or **Scan PLU** depending on the machine.

* PLUCode	Description	DeptNumber	DeptDesc	Price1	PresetF
10	OPEN BEERs	2	OPEN BEER	\$0.00	<input type="checkbox"/>
220711	PABST 6PK CAN	3	DOM BEER	\$7.19	<input checked="" type="checkbox"/>
220741	PABST 16OZ 6PK C	3	DOM BEER	\$7.19	<input checked="" type="checkbox"/>
719984	COORS LT 6PK	3	DOM BEER	\$6.29	<input checked="" type="checkbox"/>
1343541	MILLER LITESGL 1	3	DOM BEER	\$2.02	<input checked="" type="checkbox"/>
1820000801	BUSCH LGHT 12PK	3	DOM BEER	\$10.79	<input checked="" type="checkbox"/>
1820000989	BUSCH LGHT 12PK	3	DOM BEER	\$10.79	<input checked="" type="checkbox"/>

19. Select the PLUs in the lower grid to link. Hint: To select a group of PLUs, click on the first line, hold down the Shift key and scroll to the last line to include in the Link, then release the Shift key. To select all PLUs in the list click the asterisks which is at the far left next to the column header "PLUCode". The group of PLUs will be highlighted.

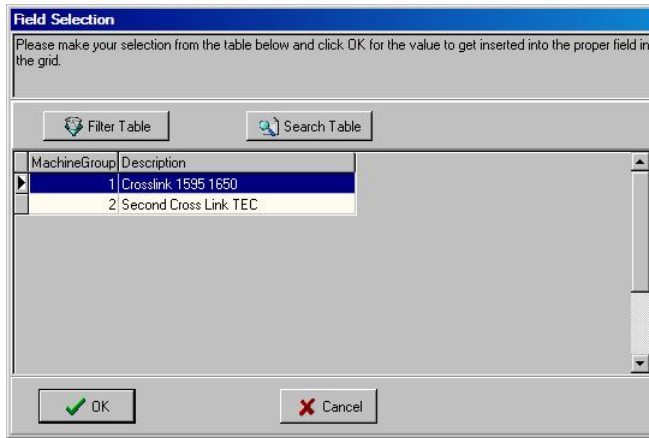
* PLUCode	Description	DeptNumber	DeptDesc	Price1	PresetF
10	OPEN BEERs	2	OPEN BEER	\$0.00	<input type="checkbox"/>
220711	PABST 6PK CAN	3	DOM BEER	\$7.19	<input checked="" type="checkbox"/>
220741	PABST 16OZ 6PK C	3	DOM BEER	\$7.19	<input checked="" type="checkbox"/>
719984	COORS LT 6PK	3	DOM BEER	\$6.29	<input checked="" type="checkbox"/>
1343541	MILLER LITESGL 1	3	DOM BEER	\$2.02	<input checked="" type="checkbox"/>
1820000801	BUSCH LGHT 12PK	3	DOM BEER	\$10.79	<input checked="" type="checkbox"/>
1820000989	BUSCH LGHT 12PK	3	DOM BEER	\$10.79	<input checked="" type="checkbox"/>

20. Hint: To remove selected lines from a highlighted group, hold down the Ctrl (Control) key and click on the line to be removed from the cross linking. The Ctrl (Control) key can also be held down while clicking with the mouse to pick and chose PLUs in the list to select

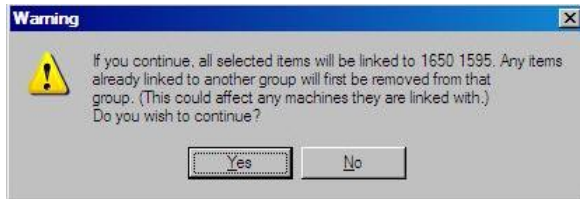
* PLUCode	Description	DeptNumber	DeptDesc	Price1	PresetF
10	OPEN BEERs	2	OPEN BEER	\$0.00	<input type="checkbox"/>
220711	PABST 6PK CAN	3	DOM BEER	\$7.19	<input checked="" type="checkbox"/>
220741	PABST 16OZ 6PK C	3	DOM BEER	\$7.19	<input checked="" type="checkbox"/>
719984	COORS LT 6PK	3	DOM BEER	\$6.29	<input checked="" type="checkbox"/>
1343541	MILLER LITESGL 1	3	DOM BEER	\$2.02	<input checked="" type="checkbox"/>
1820000801	BUSCH LGHT 12PK	3	DOM BEER	\$10.79	<input checked="" type="checkbox"/>
1820000989	BUSCH LGHT 12PK	3	DOM BEER	\$10.79	<input checked="" type="checkbox"/>

- Link To CrossLink Group
- Synchronize Crosslinks
- Remove Items from Crosslinks

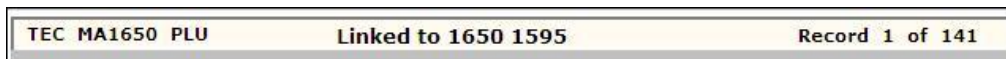
21. Right-click on the highlighted group to get the drop-down menu above. To link the group of PLUs click the **Link To CrossLink Group**.
22. To remove items from a cross link already created, the last option on the drop down list, **Remove items from Crosslinks** can be picked.



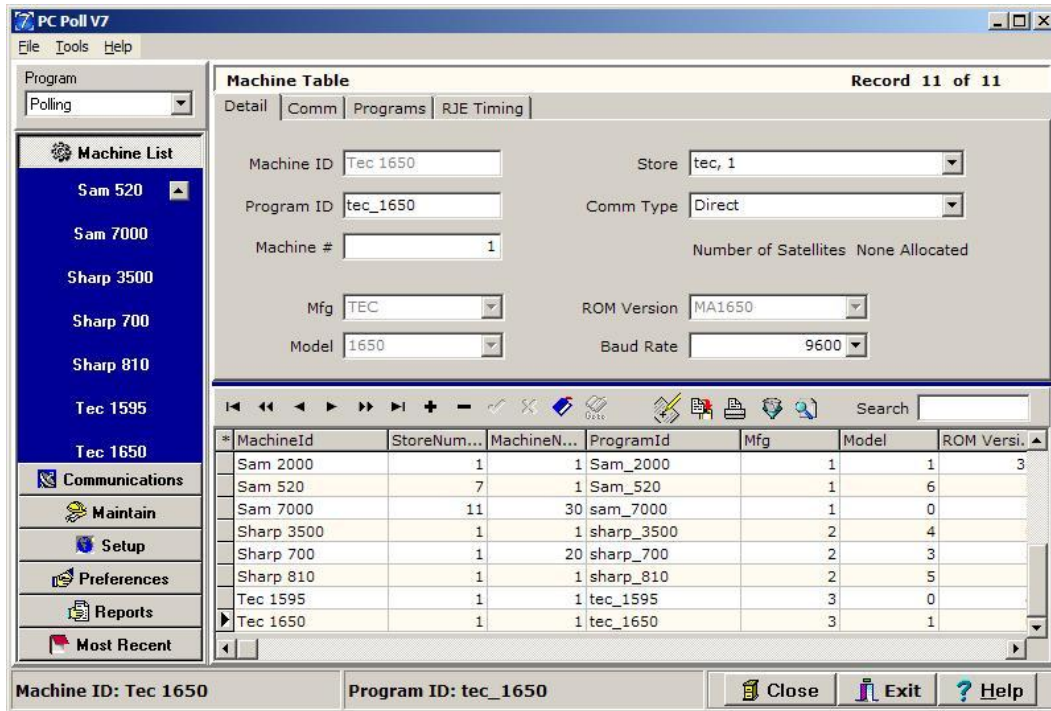
23. Select the correct Crosslink Machine Group and click **OK**. This window only appears if there is more than one crosslink group.



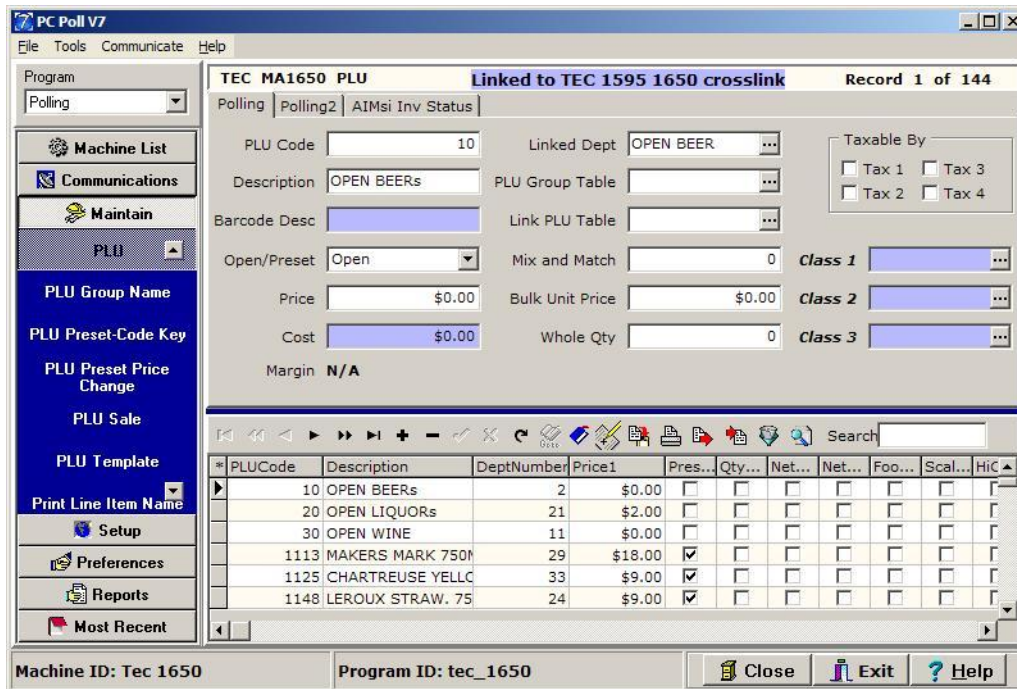
24. The warning above will appear. Click **Yes**. This will now link the group selected in the previous step to the cross link group of registers.



25. Click on each of the items in the grid just cross linked. Near the top of the screen the user should see a label indicating that the item is linked.



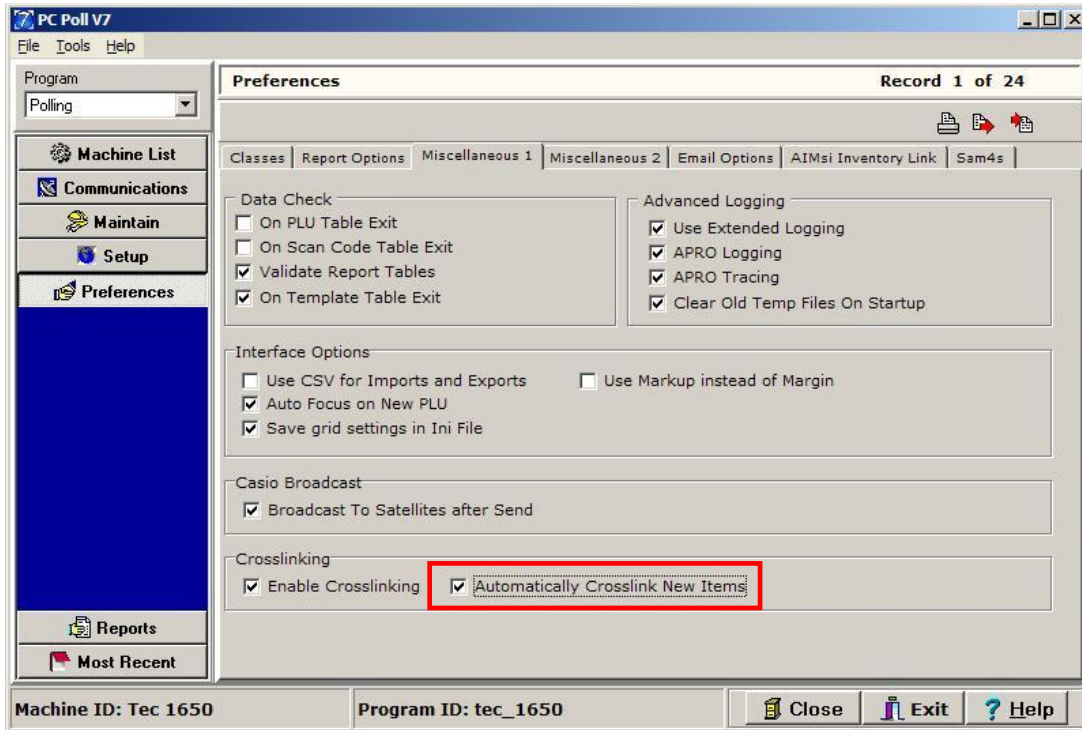
26. Now to verify the crosslinks, click on the **Machine List** in the left menu. Click on the 2nd machine in the crosslink group.



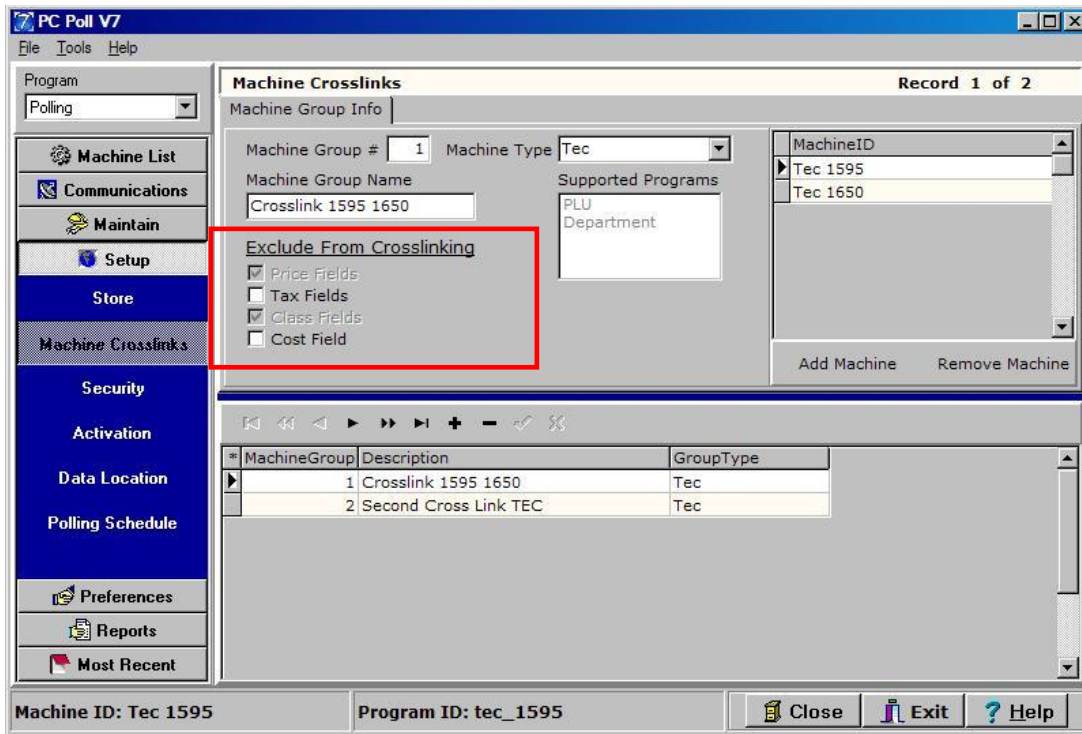
27. Go into the 2nd machine's PLU file under **Maintain** then **PLU** on the left menu. Verify that the data has been moved over from the 1st machine. If an edit is made to linked items within the 2nd

machine of the linked group, the changes will appear in the first machine. If the user wants to just edit the first machine, highlight all items and remove the crosslinks before doing the edits.

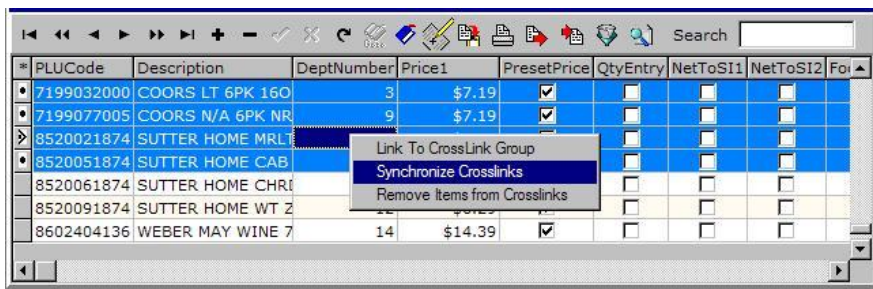
28. If new items are added to the first machine, they will not appear in the second machine unless they are manually linked.



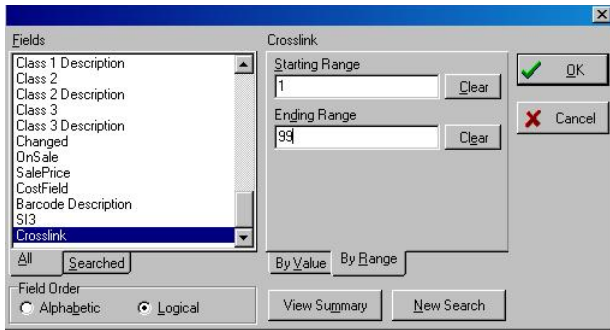
29. To have new items automatically added to the crosslink group, return to **Preferences** on the left menu and enable **Automatically Crosslink New Items** on the **Miscellaneous 1** tab.




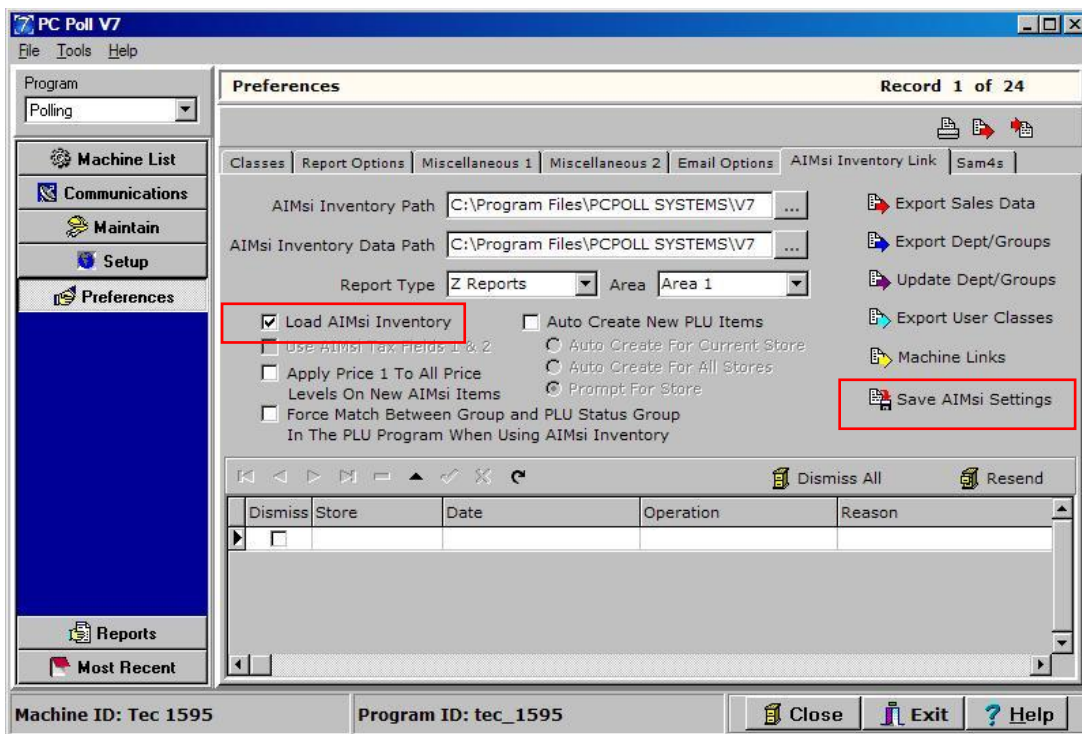
30. To exclude options from cross linking, go to **Setup** in the left menu. Note that under **Exclude From Crosslinking**, **Price Field** and **Class Fields** are grayed out. These two fields are automatically picked when **AIMsi Inventory Link** is active. Check off the fields to exclude.



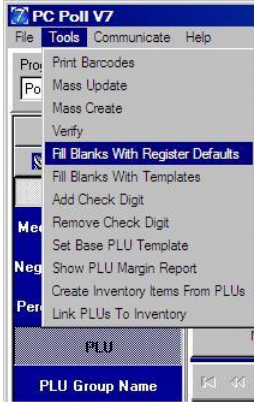
31. To use the **Synchronize CrossLinks** feature, return to the **PLU** area, highlight some or all items and select the **Synchronize Crosslinks** option. After making changes to the any **Exclude from Crosslinking** options, users should synchronize their items. Return to machine 2 and verify the updates if desired. *Note: Unlinked items that are edited will not transfer.*
32. A Synchronize CrossLinks should also be done if items are edited at the cash register. Simply save the file, go into the PLU/UPC area, Select the items & synchronize the files. *Note: If changes are made in both registers, users may need to choose which file to use. For the fields used in the crosslink, there can only be one set of values.*



33. Crosslink values can be filtered by clicking the **Filter records** button  on the toolbar then by choosing the **By Range** tab on the screen above and entering a **Starting Range** and an **Ending Range**.



34. When using crosslinks with Version 8 AIMsi Inventory active, the crosslinks menu will look different. To activate AIMsi Inventory, select **Preferences** on the left menu. Check off **Load AIMsi Inventory** and **Save AIMso Settings** on the **AIMsi Inventory Link** tab.
35. Crosslinks are created on a per record basis. It is possible to use more than one crosslink group within one PLU/UPC/Scan PLU file. However, a particular PLU/UPC item can only be linked to one crosslink group.



36. Click on **PLU** under **Maintain** on the left menu. If desired, remove all crosslinks. Be sure to go to the **Tools** menu at the top of the screen and scroll down to **Fill Blanks With Register Defaults**. This will populate all fields that do not exist in the second machine but do in the first.
37. On the **Tools** menu scroll down to **Verify** to verify the PLU data.
38. Send these select files to the cash register as needed.
39. A similar process can be repeated to crosslink groups, departments, and PLU Status Group files.