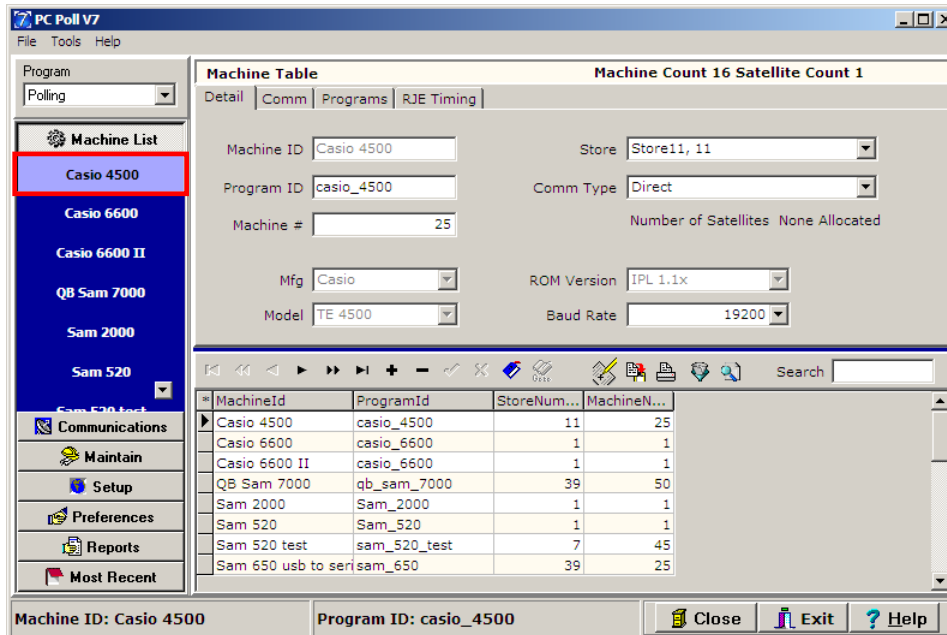
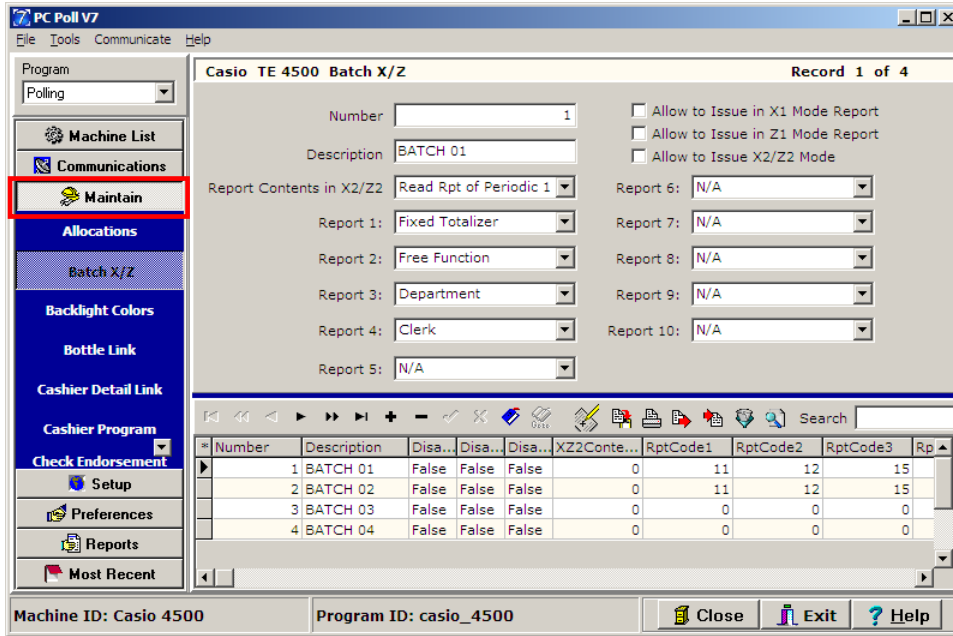


# Program Maintenance

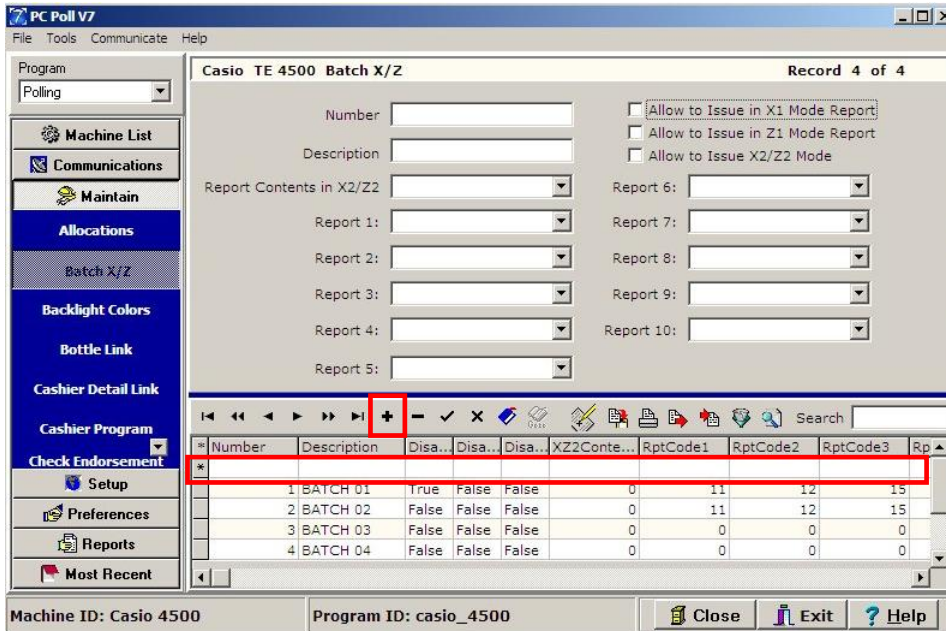
The Maintain Area of the program allows the user to create, delete and maintain/edit program information for every program that is available for PC programming.




1. To begin, select the appropriate register from the Machine List area by clicking on **Machine List** button on the menu on the left side of the screen. Click on the register in the list on the left under **Machine List**. In this example the Casio 4500 is picked.



2. Then click on the **Maintain** button (in the red box) on the menu on the left side of the screen.
3. Select the program to be maintained. In the example above, **Maintain** was clicked on. This will bring up that specific program's grid listing and the detail of the first record in the listing.



4. A new record can be added by clicking on the **Insert new record**  button on the toolbar.

Casio TE 4500 Batch X/Z Record 4 of 4

Number   Allow to Issue in X1 Mode Report  
 Description   Allow to Issue in Z1 Mode Report  
 Allow to Issue X2/Z2 Mode

Report Contents in X2/Z2   
 Report 1:   
 Report 2:   
 Report 3:   
 Report 4:   
 Report 5:   
 Report 6:   
 Report 7:   
 Report 8:   
 Report 9:   
 Report 10:

#	Number	Description	Disa...	Disa...	Disa...	XZ2Conte...	RptCode1	RptCode2	RptCode3	Rp
*	5	BATCH 05								
	1	BATCH 01	True	False	False		0	11	12	15
	2	BATCH 02	False	False	False		0	11	12	15
	3	BATCH 03	False	False	False		0	0	0	0
	4	BATCH 04	False	False	False		0	0	0	0

5. Add the new record information to the top part of the screen. The information will be added to the lower grid as it is added in the upper portion of the screen.

Number   
 Description

6. The data entry boxes like those above for **Number** and **Description** allow the user to click in the entry box and type in the data.

Report Contents in X2/Z2   
 Report 1:   
 Report 2:   
 Report 3:   
 Report 4:   
 Report 5:   
 Report 6:   
 Report 7:   
 Report 8:   
 Report 9:   
 Report 10:

7. Entry boxes with the  buttons will open a drop down menu if the  button is clicked.

**A.**


Allow to Issue in X1 Mode Report  
 Allow to Issue in Z1 Mode Report  
 Allow to Issue X2/Z2 Mode

**B.**

Allow to Issue in X1 Mode Report  
 Allow to Issue in Z1 Mode Report  
 Allow to Issue X2/Z2 Mode

8. The entry boxes above in Figure A are selected by clicking in the appropriate individual box or the description next to it. In Figure B a check mark appears in the top box.

* CashierNum	Description	CheckNu...	DrawerNum	SecretNum	ClerkAttri...	DftMenuS...	ComRate1
1	yC01	1	0	1	0	0	
2	yC02	2	0	2	0	0	
3	yC03	3	0	3	0	0	
4	yC04	4	0	4	0	0	
5	yC05	5	0	5	0	0	

9. A current record can be deleted by clicking on the record to delete in the lower which highlights it in the grid. Then click the **Delete current record**  button to remove it. *Please Note: Due to some register constraints, the **Delete** button may clear the data instead of removing the record.*

Casio TE 4500 Batch X/Z Record 5 of 5

Number:   Allow to Issue in X1 Mode Report  
 Allow to Issue in Z1 Mode Report  
 Allow to Issue X2/Z2 Mode

Description: BATCH 05

Report Contents in X2/Z2: Read Rpt of Periodic 1

Report 1: Clerk Report 6:

Report 2: Department Report 7:

Report 3: Employee Report 8:

Report 4: Fixed Totalizer Report 9:

Report 5:  Report 10:

* Number	Description	Disa...	Disa...	Disa...	XZ2Conte...	RptCode1	RptCode2	RptCode3	Rp
1	BATCH 01	True	False	False	0	11	12	15	
2	BATCH 02	False	False	False	0	11	12	15	
3	BATCH 03	False	False	False	0	0	0	0	
4	BATCH 04	False	False	False	0	0	0	0	
5	BATCH 05	True	False	False	0	17	15	29	

10. Once the top portion of the screen is filled in, be sure to click the **Post changes of current record** button on the toolbar to save the new record.

Casio TE 4500 Batch X/Z Record 5 of 5

Number:

Description:

Report Contents in X2/Z2:

Report 1:

Report 2:

Report 3:

Report 4:

Report 5:

Report 6:

Report 7:

Report 8:

Report 9:

Report 10:

Allow to Issue in X1 Mode Report  
 Allow to Issue in Z1 Mode Report  
 Allow to Issue X2/Z2 Mode

---

* Number	Description	Disa...	Disa...	Disa...	XZ2Conte...	RptCode1	RptCode2	RptCode3	Rp
1	BATCH 01	True	False	False	0	11	12	15	
2	BATCH 02	False	False	False	0	11	12	15	
3	BATCH 03	False	False	False	0	0	0	0	
4	BATCH 04	False	False	False	0	0	0	0	
5	BATCH 05	True	False	False					

11. Clicking the **Cancel changes to current record** button (the X button) on the toolbar will delete the changes just made to a record and the button will be grayed out. *Note: Each register type and ROM/IPL version has unique functionality. For a full description of a particular register field, please consult a register dealer or register manual.*

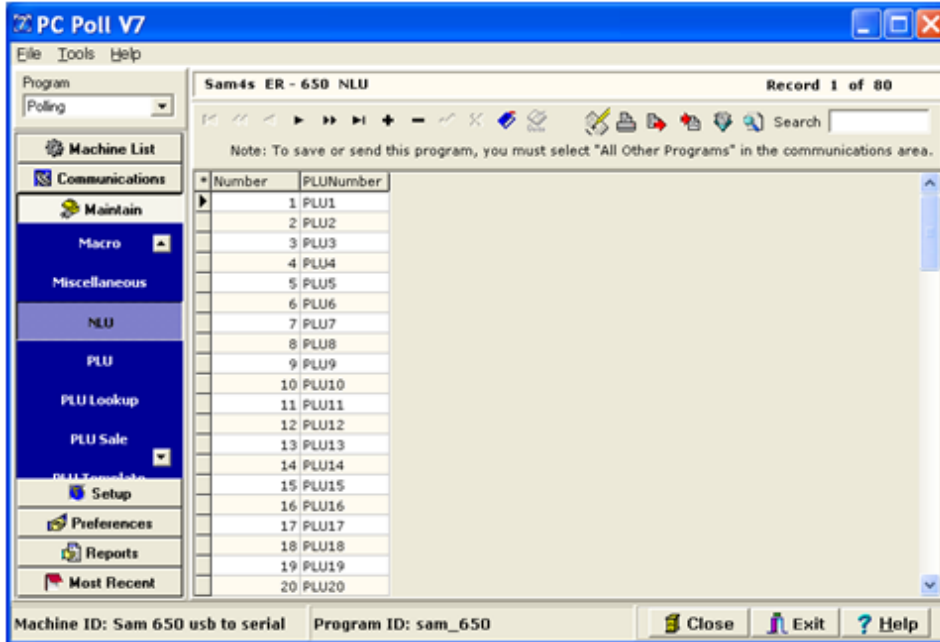
The **Close** button will close the Maintain Area and take the user to the main screen of the software.


The **Exit** button will close the entire software.

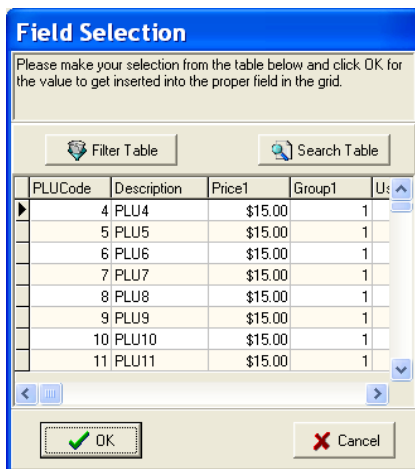
The **Help** button brings up the V7 Help Files.

### Advanced Programming Option

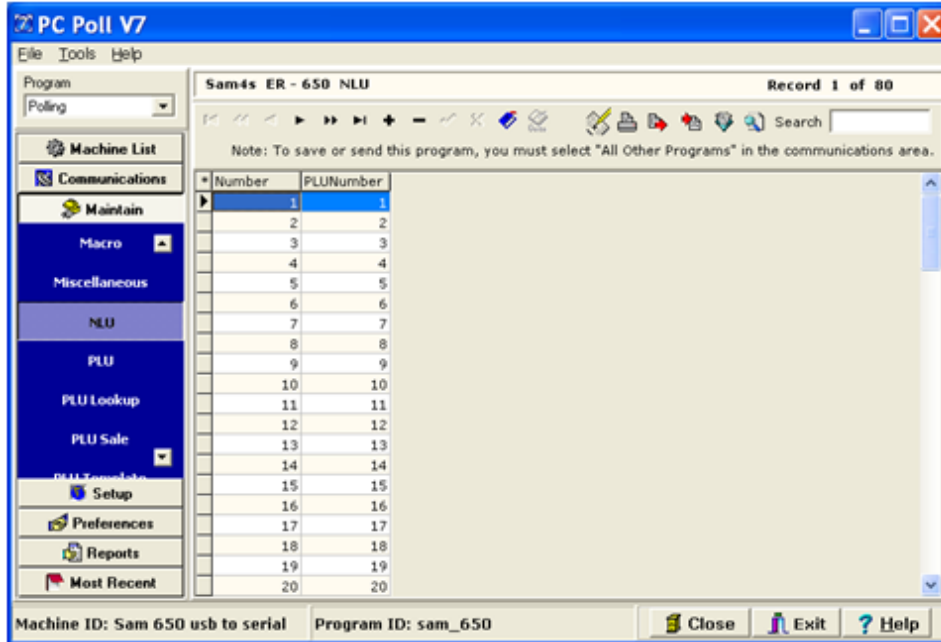
A new feature has been added to V7.3.1.148 and above. Users now have a hidden option to toggle grid field masking on and off.



For example, by default the software will display the names of the PLUs associated with particular NLU keys. To edit these keys, users will click in the PLU Number column. A  button will appear at the end of the PLUNumber entry line. Click the button.



The software will display a Field Selection screen.



If the user prefers to enter a PLU code manually or to use a scanner, the user can turn the Field Selection option off by pressing and holding the **Ctrl** (Control) key on the keyboard and then pressing the ~ (tilde) key. The tilde is found on the keyboard in the upper left next to the number "1" key. The option can be turned back on by following the same key sequence or by leaving the program area and re-entering. This is an advanced programming option.